

# MONTHLY MEMBERSHIP PROGRESS REPORT

District 13 OH3

Results as of: 5/31/2020

GMT:

LOCATION OHIO

GMT CA

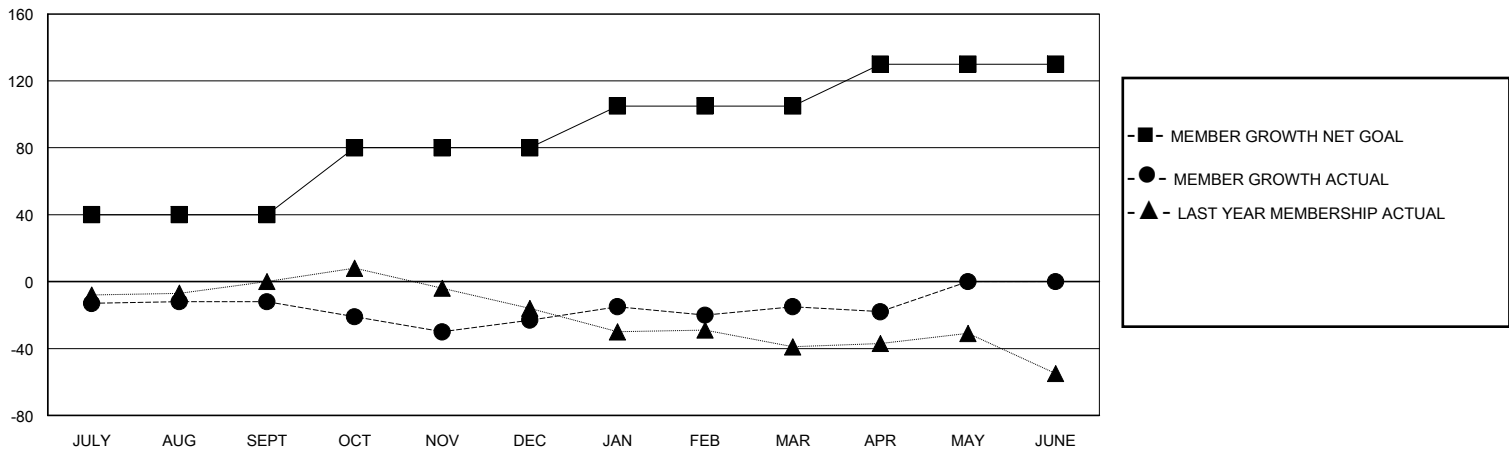
Clubs			
RESULTS FOR 2019-2020			
QUARTER	NEW CLUB GOAL	NEW CLUBS	DROPPED CLUBS
JULY/AUG/SEPT	0	0	0
OCT/NOV/DEC	0	0	1
JAN/FEB/MAR	1	0	0
APR/MAY/JUNE	0	0	0

Members			
RESULTS FOR 2019-2020			
QUARTER	MEMBER GROWTH NET GOAL	MEMBER GROWTH ACTUAL	DROPPED MEMBERS ACTUAL (including transfers)
JULY/AUG/SEPT	40	34	44
OCT/NOV/DEC	40	25	36
JAN/FEB/MAR	25	35	26
APR/MAY/JUNE	25	4	7

GOALS AND ACTUAL NEW CLUBS CUMULATIVE



GOALS AND ACTUAL MEMBERS CUMULATIVE



DROPPED CLUBS: 1

30 CLUBS OF 56 ADDED 1 OR MORE NEW MEMBERS

GENDER DISTRIBUTION

MALE 1,003 (68.56%)  
FEMALE 460 (31.44%)

DROPPED MEMBERS

DECEASED	21
CLUB CANCELLED	0
OTHER	92
<b>TOTAL</b>	<b>113</b>

[CLICK HERE FOR CUMULATIVE MEMBERSHIP DATA](#)

TOTAL FAMILY UNIT MEMBERS	281
FAMILY MEMBERS PAYING HALF DUES	146